

Make sure you have the following:



Installation Software CD



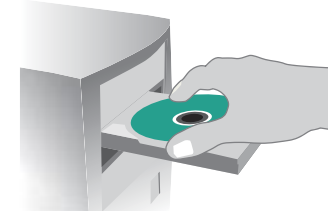
Desktop PCI Card

System Requirements

PC-compatible computer with one available PCI slot running Windows® 98SE, Me, 2000, XP, or 2003

Quick Setup →

1. Connect



Connecting the Hardware



- 1.1 Turn off the power to the computer and disconnect the power cord.
- 1.2 Remove the screws behind your computer case that secure the computer cover and remove the cover.

- 1.3 Touch any metal part of the case to discharge static electricity, to avoid damage to your product or the computer.



- 1.4 Locate an empty PCI expansion slot (usually white in color). Confirm that the Card will fit into the slot you have chosen.



- 1.5 Remove the metal PCI bracket from the back of the computer that corresponds to the PCI slot you selected. If there is a screw, place it in a safe place, as you will be using it to attach the Card to the computer later.



- 1.6 Push the Card firmly into the PCI slot that you have chosen.

- 1.7 Now secure the Card with the screw that you previously placed in a safe place.

- 1.8 Replace the computer's cover. Now that the Card is installed, you can reconnect the power cord and turn the computer back on.

- 1.9 Connect one end of your CAT5 cable into the rear of the Card.

- 1.10 Connect the other end of the CAT5 cable into an available Fast Ethernet port on your router, switch, or any other networking device.

NOTE:

A standard Belkin network cable cannot be used to directly connect two computers. A specially wired cable called a crossover cable is needed to allow you to connect two computers without the use of a network hub or switch. Belkin crossover cables are yellow (Belkin part number A3X126-XX-YLW-M).

2. Install



Installing the Desktop PCI Card Drivers

Windows 98SE:



- 2.1 You may need your Windows 98SE CD-ROM to complete the installation of the Card. If you do not have your Windows 98SE CD-ROM, and the installation wizard asks you for the Windows 98SE CD-ROM, you will need to locate it. Belkin cannot provide the Windows 98SE files you need to complete the installation.

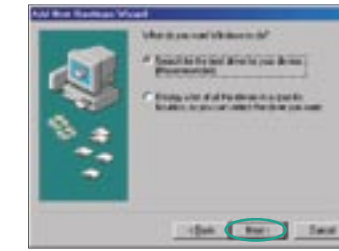
- 2.2 Install the Card in your computer as described in the section "Connecting the Hardware".

- 2.3 Turn on the power to the computer. After Windows starts up, it will automatically detect that a new device has been installed. The following screen will appear. Insert the Card's CD into the CD-ROM drive. Click "Next".

(click)

NOTE:

If you need to install drivers for DOS, NDIS, Windows 95, or Windows NT®, please refer to the text (.txt) files located in the driver-specific directory of the CD.



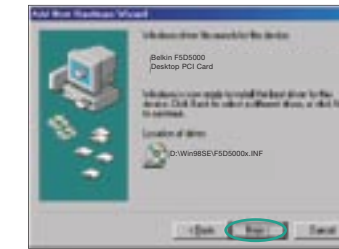
- 2.4 When asked, "What do you want Windows to do?", select "Search for the best driver for your device. (Recommended)" and click "Next".

(click)



- 2.5 In the following window, place a check mark next to "CD-ROM drive". Click "Next".

(click)



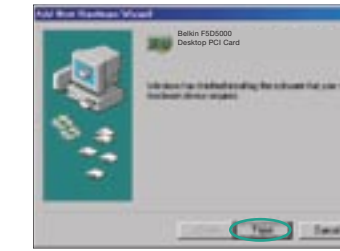
- 2.6 Windows will find the appropriate drivers and the following screen will appear. Click "Next".

(click)



- 2.7 Windows may ask you to insert your Windows 98SE CD-ROM. If so, insert your Windows 98SE CD-ROM and click "OK". If asked to specify where the CD-ROM is, type "D:\Win98SE" where "D:\\" is the drive letter of your CD-ROM drive. Click "OK".

(click)



- 2.8 When the following screen appears, click "Finish".

(click)

- 2.9 Windows will ask you to restart the computer. Click "Yes" to restart your computer. When your computer restarts, the Card will be ready to use.

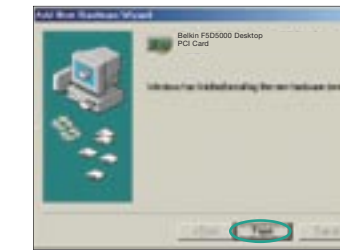
Windows Me:



- 2.1 Install the Card in your computer as described in the section "Connecting the Hardware".

- 2.2 Turn on the power to the computer. After Windows starts up, it will automatically detect that a new device has been installed. The following screen will appear. Insert the Card's CD into the CD-ROM drive. Click "Next".

(click)

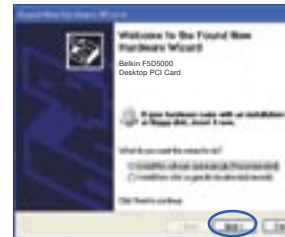
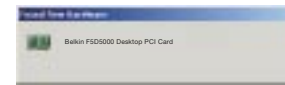


- 2.3 Windows will automatically find the drivers and install them. Click "Finish".

(click)

- 2.4 Windows will ask you to restart the computer. Click "Yes" to restart your computer. When your computer restarts, the Card will be ready to use.

Windows 2000:



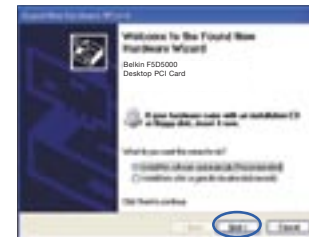
- 2.1 Install the Card in your computer as described in the section "Connecting the Hardware".
- 2.2 Turn on the power to the computer. After Windows starts up, it will automatically detect that a new device has been installed. The following screen will appear. Insert the Card's CD into the CD-ROM drive. Click "Next". Windows will automatically install the drivers.

(click) **Next**

(click) **Finish**

- 2.3 When the window above disappears, the Card is installed and ready to use.

Windows XP:



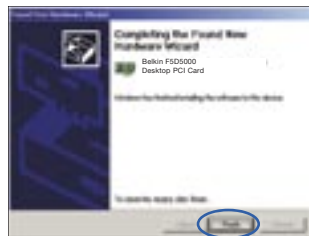
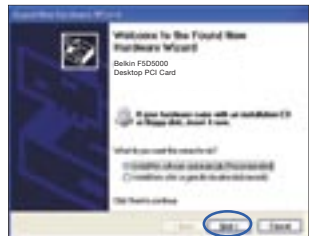
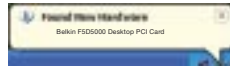
- 2.1 Install the Card in your computer as described in the section "Connecting the Hardware".
- 2.2 Turn on the power to the computer. Windows will automatically detect that a new device has been installed and will display the following window in the bottom right corner of the screen.
- 2.3 Insert the Card's CD into the CD-ROM drive. Click "Next". Windows will install the drivers for the Card.

(click) **Next**

(click) **Finish**

- 2.4 Windows will tell you when the Card is ready to use.

Windows 2003:



- 2.1 Install the Card in your computer as described in the section "Connecting the Hardware".
- 2.2 Turn on the power to the computer. After Windows starts up, it will automatically detect that a new device has been installed. The following screen will appear. Insert the Card's CD into the CD-ROM drive. Click "Next". Windows will automatically install the drivers.

(click) **Next**

(click) **Finish**

- 2.3 When the window above disappears, the Card is installed and ready to use.

BELKIN®

Desktop PCI Card

BELKIN®

Desktop PCI Card

BELKIN®

www.belkin.com

Belkin Tech Support

US: 877-736-5771
 310-898-1100 ext. 2263
 Europe: 00 800 223 55 460
 Australia: 1800 235 546
 New Zealand: 0800 235 546
 Singapore: 800 616 1790

Belkin Corporation

501 West Walnut Street
 Los Angeles, CA 90220, USA
 310-898-1100
 310-898-1111 fax

Belkin Ltd.

Express Business Park, Shipton Way
 Rushden, NN10 6GL, United Kingdom
 +44 (0) 1933 35 2000
 +44 (0) 1933 31 2000 fax

© 2006 Belkin Corporation. All rights reserved. All trade names are registered trademarks of respective manufacturers listed.

Start Here →



Quick Installation Guide

