

**BELKIN**

**4-Port USB PCI Card  
User Manual**

**Guide d'utilisation  
de la carte PCI 4 ports USB**

**4-Port USB PCI-Karte -  
Gebrauchsanweisung**

**Handleiding voor  
4-poorts USB PCI-kaart**

**Manuale utente scheda PCI  
per USB a 4 porte**

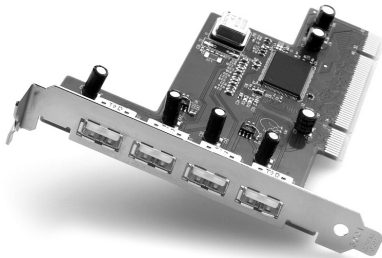
En

Fr

De

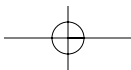
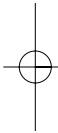
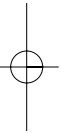
Ne

It



P73473

F5U006-UNV



## Table of Contents

**English** ..... 1

**Français (Europe)** ..... 13

**Deutsch** ..... 25

**Nederlands** ..... 37

**Italiano** ..... 49

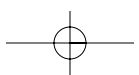
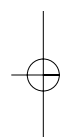
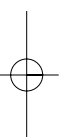
En

Fr

De

Ne

It



## Features

En

- Four USB host adapters integrated into a single PCI card, each providing a full 12Mbps of USB bandwidth
- Allows simultaneous operation of high-bandwidth peripherals such as USB speakers and video capture devices
- Auto-detects the connection of new devices and the speed of each device
- Fully compliant with USB specifications
- Plug-and-Play

### Package Contents

- (1) Belkin 4-Port USB PCI Card
- (1) User Manual

### System Requirements

PC-compatible computer running Windows® 98,  
Windows 2000

-or-

Macintosh Computer running Mac® OS 8.6 or higher  
1 Available PCI Slot

## Installing the Belkin 4-Port USB PCI Card

1. **POWER OFF THE COMPUTER AND DISCONNECT THE POWER CORD.**
2. Remove the screws that secure the computer cover and remove the cover.
3. Touch any metal part of the case to ground yourself. This will discharge any static electricity that could damage your computer.
4. Locate an empty PCI expansion slot.
5. Confirm that the 4-Port USB PCI Card will fit into the slot you have chosen.
6. Remove the port cover from the back of the PC which corresponds to the PCI slot you selected. If there is a screw, place it in a safe spot as you will be using it to attach the 4-Port USB PCI Card.
7. Push the 4-Port USB PCI Card firmly into the slot. Apply pressure as needed until the edge connector is fully seated.
8. Now secure the 4-Port USB PCI Card with the screw that you previously placed in a safe place.
9. Replace the computer's cover.
10. Now that the 4-Port USB PCI Card is installed, you can replace the power cable. Proceed to the next section, "Installing the Software Drivers."

## Installing the Software Drivers

En

### Macintosh Driver Installation

When installing the 4-Port USB PCI Card in a PowerPC-based Macintosh computer with PCI slots and without built-in USB ports, you must also install the Apple USB Adapter Card Support extensions. These extensions may be downloaded from Apple's support website: <http://asu.info.apple.com>

- Users of Mac® OS version 8.5.1 should download USB Adapter Card Support version 1.2.
- Users of Mac OS version 8.6 and above should download USB Adapter Card Support version 1.3.5, or the most recent version provided on the Apple support website.

**NOTE:** The USB Adapter Card Support extensions **SHOULD NOT** be installed on Macintosh® Computers with built-in USB ports. These computers already include support for built-in USB ports and USB PCI adapter cards.

## Installing the Software Drivers (continued)

### Installation Procedure for Windows® 98 and Windows 98 Second Edition

1. Turn on power and start the Windows 98 operating system.
2. Windows will recognize the 4-Port USB PCI Card as a “Standard OpenHCD USB Host Controller” and the “Add New Hardware Wizard” dialog box will open. Click “Next”.



3. Select “Search for the best driver for your device” and click “Next”.





## Installing the Software Drivers (continued)

En

4. Uncheck all the boxes and Click "Next".



5. Windows® will find the drivers for "Standard OpenHCD USB Host Controller". Click "Next".



## Installing the Software Drivers (continued)

- Windows® may ask you for the Windows installation CD. If asked, insert the CD into the CD-ROM Drive and follow the prompts.
- After Windows installs the required drivers, installation of the first port is complete. Click "Finish".



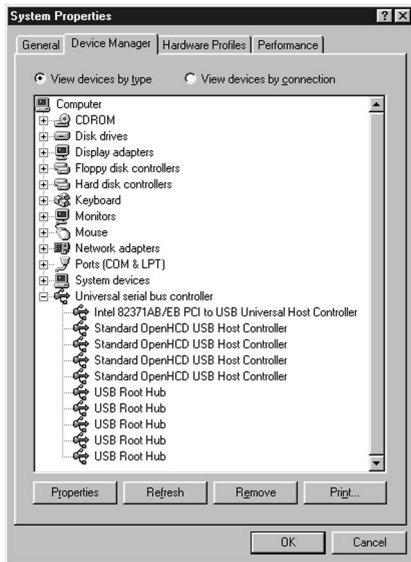
- The *Add New Hardware Wizard* will repeat the installation process for the three remaining USB Host Controllers. Repeat steps 2–7 until all ports are installed.
- After installation of the four USB Host Controllers, Windows will detect "USB Root Hub" and automatically install the required driver support.
- Installation is now complete.

## Installing the Software Drivers (continued)

En

### Verifying Proper Installation

Check the “Windows Device Manager” to confirm that the 4-Port USB PCI Card has been properly installed. A complete installation will add four “Standard OpenHCD USB Host Controller” entries to the Device Manager List, and four “USB Root Hub” entries.



## Installing the Software Drivers (continued)

### Installation Procedure for Windows® 2000

1. Turn off the computer and remove the cover.
2. Locate an empty PCI slot and insert the 4-Port USB PCI Card firmly into the slot.
3. Replace the cover and turn on the computer.
4. After loading, Windows will detect "PCI Universal Serial Bus." The required driver support will be automatically installed. No user input is required.
5. After installation, check the Windows Device Manager to confirm that the 4-Port USB PCI Card has been properly installed. A complete installation will add four "Standard OpenHCD USB Host Controller" entries to the Device Manager List, and four "USB Root Hub" entries.

# Information

En

## FCC Statement

### DECLARATION OF CONFORMITY WITH FCC RULES FOR ELECTROMAGNETIC COMPATIBILITY

We, Belkin Components, of 501 West Walnut Street, Compton CA 90220, declare under our sole responsibility that the product:

F5U006-UNV

to which this declaration relates:

Complies with Part 15 of the FCC Rules. Operation is subject to the following two conditions: (1) this device may not cause harmful interference, and (2) this device must accept any interference received, including interference that may cause undesired operation.

## CE Declaration of Conformity

We, Belkin Components, declare under our sole responsibility that the F5U006-UNV, to which this declaration relates, is in conformity with Generic Emissions Standard EN50081-1 and with Generic Immunity Standard EN50082-1 1992.

## Belkin Components Limited Lifetime Product Warranty

Belkin Components warrants this product against defects in materials and workmanship for its lifetime. If a defect is discovered, Belkin will, at its option, repair or replace the product at no charge provided it is returned during the warranty period, with transportation charges prepaid, to the authorized Belkin dealer from whom you purchased the product. Proof of purchase may be required.

This warranty does not apply if the product has been damaged by accident, abuse, misuse, or misapplication; if the product has been modified without the written permission of Belkin; or if any Belkin serial number has been removed or defaced.

THE WARRANTY AND REMEDIES SET FORTH ABOVE ARE EXCLUSIVE IN LIEU OF ALL OTHERS, WHETHER ORAL OR WRITTEN, EXPRESSED OR IMPLIED. BELKIN SPECIFICALLY DISCLAIMS ANY AND ALL IMPLIED WARRANTIES, INCLUDING, WITHOUT LIMITATION, WARRANTIES OF MERCHANTABILITY AND FITNESS FOR A PARTICULAR PURPOSE.

No Belkin dealer, agent, or employee is authorized to make any modification, extension, or addition to this warranty.

BELKIN IS NOT RESPONSIBLE FOR SPECIAL, INCIDENTAL, OR CONSEQUENTIAL DAMAGES RESULTING FROM ANY BREACH OF WARRANTY, OR UNDER ANY OTHER LEGAL THEORY, INCLUDING BUT NOT LIMITED TO LOST PROFITS, DOWNTIME, GOODWILL, DAMAGE TO OR REPROGRAMMING, OR REPRODUCING ANY PROGRAM OR DATA STORED IN OR USED WITH BELKIN PRODUCTS.



**belkin.com**

***Belkin Components***

501 West Walnut Street  
Compton • CA • 90220 • USA  
Tel: 310.898.1100  
Fax: 310.898.1111

***Belkin Components, Ltd.***

Unit 13 • Gatelodge Close • Round Spinney  
Northampton • Northants • NN3 8RX • United Kingdom  
Tel: +44 (0) 1604678300  
Fax: +44 (0) 1604678330

***Belkin Components B.V.***

Diamantlaan 8 • 2132 WV  
Hoofddorp • The Netherlands  
Tel: +31 (0) 235698765  
Fax: +31 (0) 235612694

© 2000 Belkin Components. All rights reserved.  
All trade names are registered trademarks of respective manufacturers listed.

