

Connecting to your Nokia 3650 PC over Bluetooth, by Belkin



belkin.com

Connecting your Bluetooth Adapter to the Nokia 3650 and PC Suite



Use with Belkin Bluetooth Software ver 1.3.x & 1.4.2.10
Bluetooth PC Adapters: F8T001 and F8T003

Connecting to your Nokia 3650 PC over Bluetooth, by Belkin

Before you Begin:

1. Make sure you have the latest version of Nokia PC Suite software installed on your computer. The Nokia PC Suite is required to connect to the Nokia 3650.

Note: You must download the PC Suite software for your Region. For example. If you purchased your Phone in the US, you must download PC Suite from www.nokiausa.com

2. Make sure the Belkin Bluetooth software and adapter is installed.

Section: 1 Activating Bluetooth and Pairing Procedure

1. Go to the **Main Menu** of your Nokia 3650.
2. Go to **Connect** and select it by pressing the center of your **Scroll Key**.
3. Select **Bluetooth**.

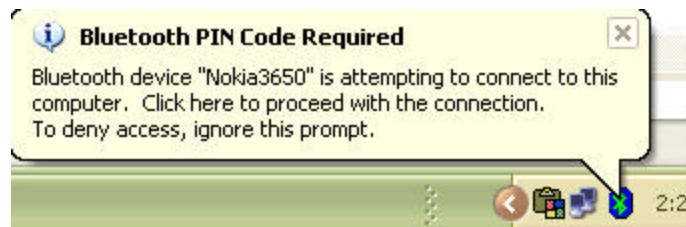


4. Make sure Bluetooth is set to **ON**.
5. Using your Scroll Key scroll to the next tab to the right in your Bluetooth Menu

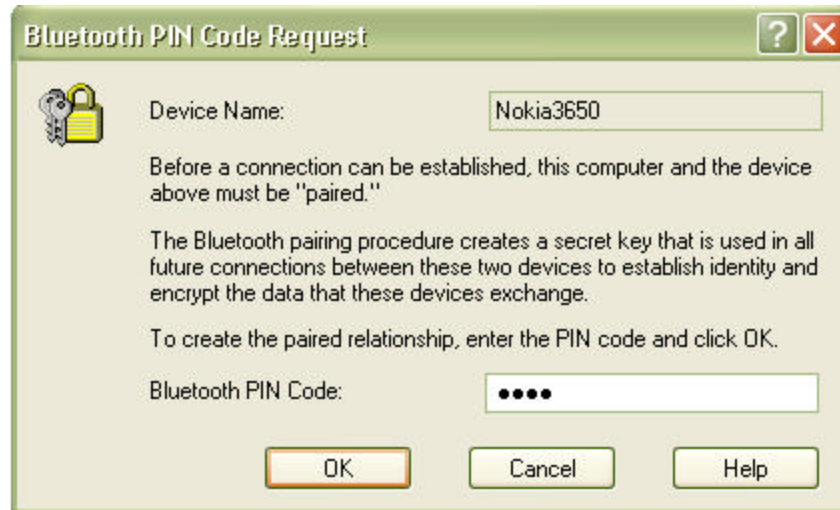
Connecting to your Nokia 3650 PC over Bluetooth, by Belkin



6. Select **OPTIONS** and then **NEW PAIRED DEVICES**
7. Your Phone will search you area for active Bluetooth devices
8. Select the Computer you would like to connect your phone To.
9. Enter a passkey, use **0000** and click **OK**.
10. On your Computer check the taskbar (next to the Clock) for the Passkey prompt
11. Click on the Bluetooth Passkey prompt or click on the Bluetooth Icon to enter the Passkey.



Connecting to your Nokia 3650 PC over Bluetooth, by Belkin



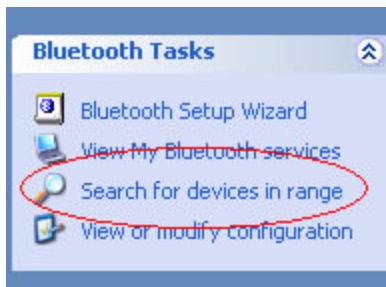
12. Enter in the Passkey (0000) and click **OK**.

Section: 2 Selecting the COM port on the computer

1. On your Computer, open Bluetooth Neighborhood or Double Click on the Bluetooth icon on the Taskbar.



2. In the Bluetooth menu., located on the left, click on **Search for Devices in range** or click on **Entire Bluetooth Neighborhood** (for Windows ME, 2K).

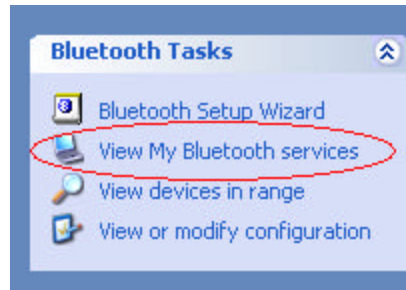


3. Make sure that the Nokia 3650 appears with a check-mark next to it. This means that the device is Paired.

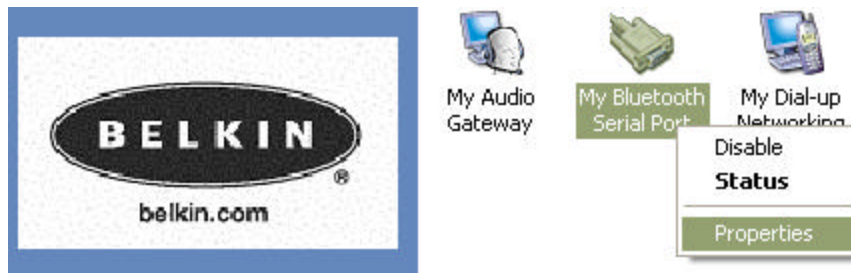


4. In the Bluetooth Menu, left, Click on **View My Bluetooth Services** or **My Device** (for Windows ME, 2K).

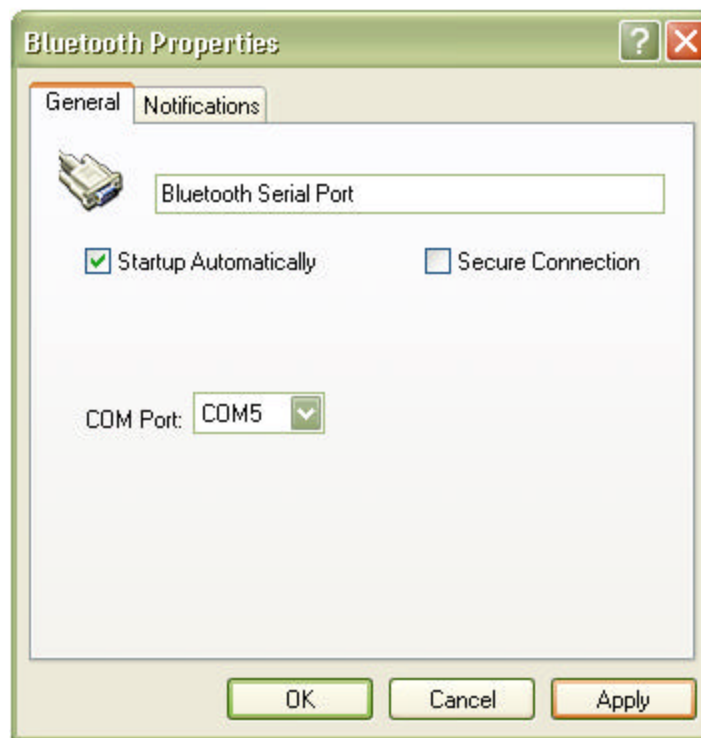
Connecting to your Nokia 3650 PC over Bluetooth, by Belkin



5. Right click on the Serial Port Icon then go to Properties.

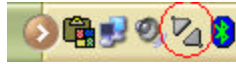


6. Make note of the COM port which is in use (Com 5) for your system. Make sure **Start up Automatically** is checked and then uncheck **Secure Connection**. Click **Apply** to save the settings..

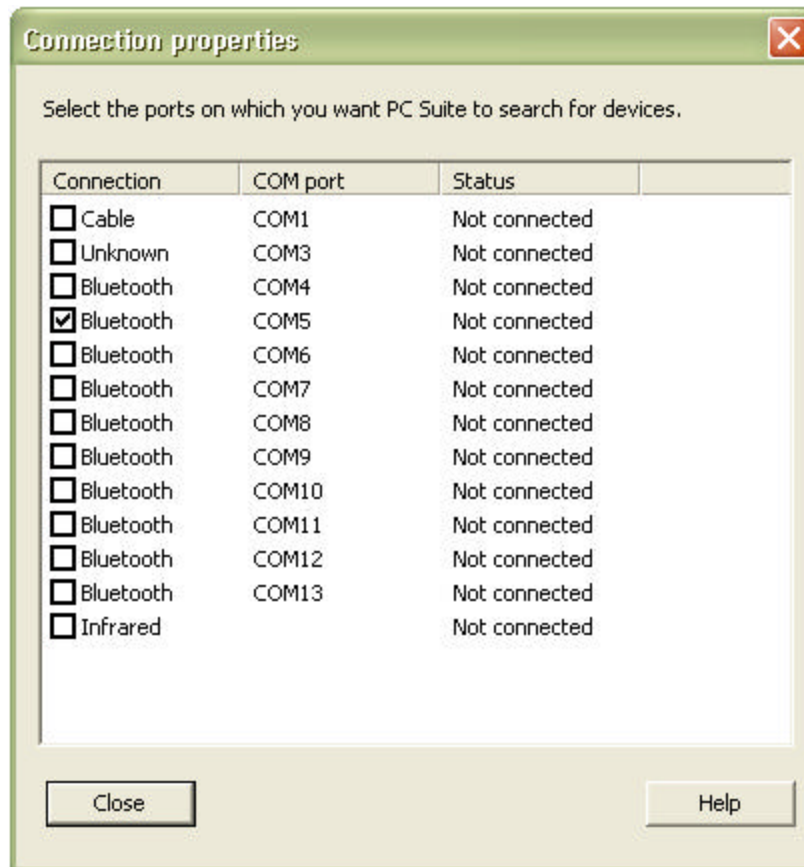


Connecting to your Nokia 3650 PC over Bluetooth, by Belkin

7. Double Click on the M-Router icon (PC Suite) on your taskbar.



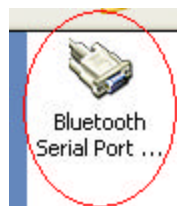
8. Make sure that Com (Noted from step 6 Above) is the only COM port checked..



9. Go Back to **Entire Bluetooth Neighborhood** or **View devices in Range** and double click on the Paired Nokia Phone Icon.



10. Double click on the serial Port icon.
11. Accept the connection on your Phone.

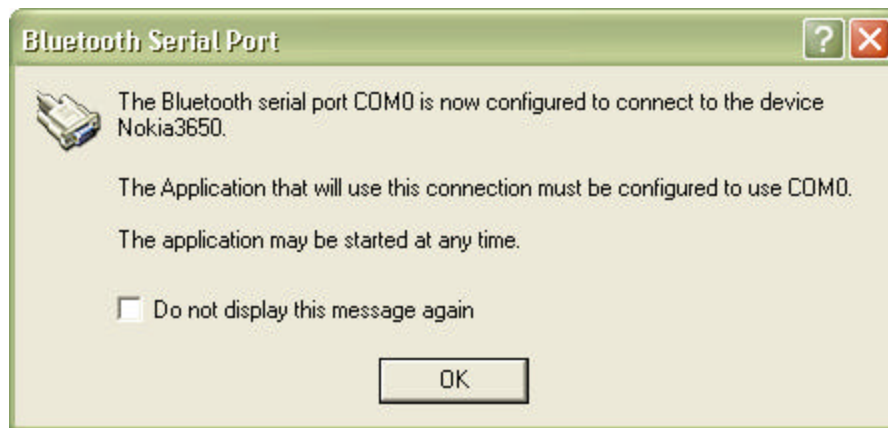


Connecting to your Nokia 3650 PC over Bluetooth, by Belkin

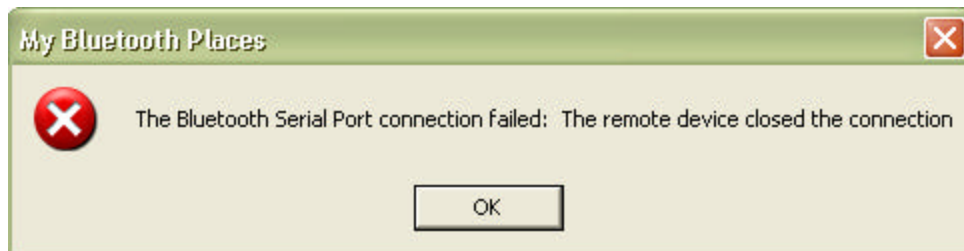
12. A window that shows the connection Status will be displayed.



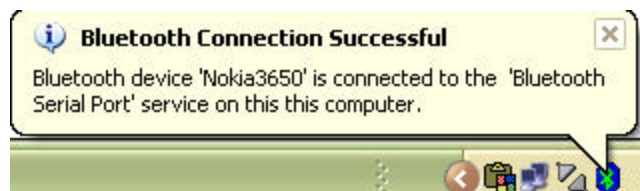
12. You may receive an **ERROR** window on your computer stating that COM 0 is being used. Click OK to continue.



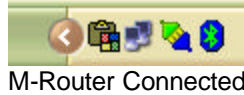
13. You may also receive a connection fail prompt. Click OK



You are now connected to your phone. Verify the connection by double clicking on the M-router icon on the bottom right of you're tool bar. The PC Suite Icon in the system tray will also turn from grayed out to blue and green meaning that is connected.



Connecting to your Nokia 3650 PC over Bluetooth, by Belkin



To disconnect, uncheck the COM port.

