

Belkin Bulldog Plus

**Shutdown Management Software
for Novell NetWare**



User's Manual

Bulldog Plus for NetWare Introduction

Congratulations on your purchase of Bulldog Plus to manage your Uninterruptible Power Supply (UPS). Bulldog Plus is designed to provide end users the ability to take proactive steps to protect their equipment from power related damages. Bulldog Plus allows for automatic shutdowns, scheduled shutdowns and a variety of other features that help you manage your system and its peripheral components.

Bulldog Plus provides detailed information about the UPS and its protected equipment. It is easy to install and program, yet has the necessary features to handle all of one's power requirements. Included is the capability for network management protocol (SNMP and DMI). Bulldog Plus will disseminate UPS information into SNMP protocol and project it to the appropriate Network Management Station (NMS), such as HP OpenView. To make use of resources on the Internet, Bulldog Plus also supports HTTP protocol. This enables end-users to monitor their UPS anywhere, anytime, by simply utilizing their web browser.

Bulldog Plus runs in the background as a Novell/Netware service, and communicates with the UPS in order to ensure that your computer and attached components are protected from any power problems.

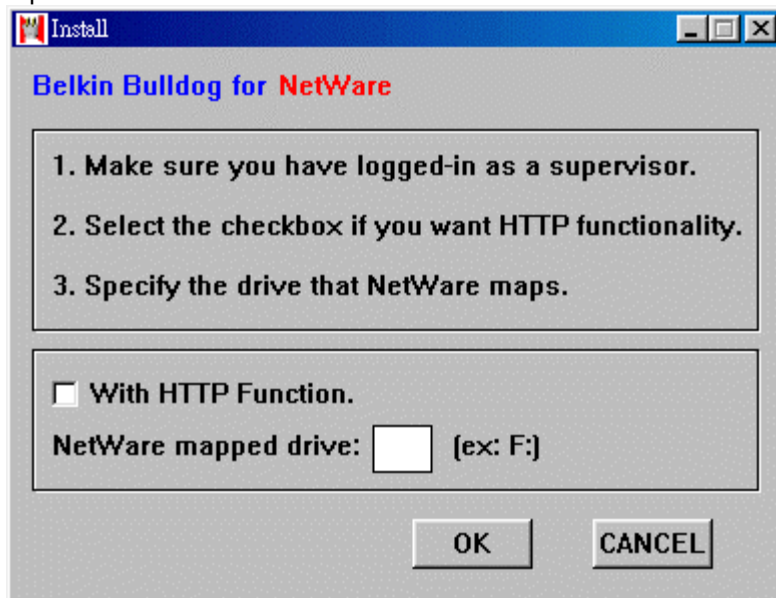
Features of Bulldog Plus Service for NetWare:

1. Graceful operating system shutdown
2. Schedule test, shutdown/restart UPS, turn on/off receptacles
3. Flexible events
4. Notification: Pager, and network broadcasting and SNMP Trap.
5. real-time values of voltage, current, frequency and loading...
6. History data & graph
7. Network monitor
8. Multi-computer shutdown/restart
9. Support Simple Network Management Protocol (SNMP)
10. Support HTTP, remote monitor and control using Internet browser

Bulldog Plus Service for NetWare Installation

Bulldog Plus for NetWare is compatible with NetWare 4.10 and above.

1. Make sure that you've logged-in the NetWare server as Supervisor or the equivalent on the client side.



2. Place Bulldog Plus CD into the CD-ROM drive. Execute the Install.exe in the NetWare folder. NetWare Installation Screen.

3. Mark the checkbox, if you want *Bulldog Plus* with HTTP function. Specify the drive that NetWare maps on your computer.

Press the OK button. The installation process will add the instruction "**Load Bulldog.nlm**" to the last line of Autoexec.ncf. Thus, your NetWare server will load *Bulldog Plus Service* automatically on its next reboot. If you want to start *Bulldog Plus Service* immediately, you can also type the command "**Load Bulldog.nlm**" on the console directly.

With HTTP Function.

NetWare mapped drive: (ex: F:)

Bulldog Service for NetWare runs in the background from the operating system.

You can access Bulldog Service for NetWare via the Bulldog Monitor program. Bulldog Service for NetWare provides most functions as Bulldog Service for MS – Windows, thus the manuals are identical with the following exceptions for MS Windows:

1. File Location

Bulldog Service for NetWare is stored in the directory SYS:\System. All related files are stored in the directory SYS:\System\Bulldog, and HTTP files are located in the directory SYS:\System\Bulldog\WWWRoot.

2. COM Port Connected to UPS

In menu *Configure->UPS->UPS Property* (see the figure below). *Bulldog for NetWare* does not support USB (Universal Serial Bus). If you want to use COM2~COM4 to connect to UPS, you have to add commands into Autoexec.ncf to activate COM port before “Load Bulldog.nlm”. See the following table for reference.

COM Ports-Commands Needs to add to *AUTOEXEC.NCF*

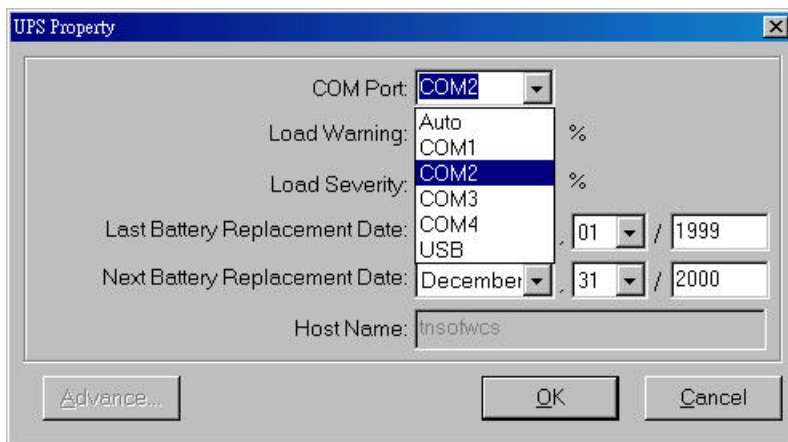
COM1: LOAD AIOCOMX {PORT=0x3f8} {INT=4} {NAME=COM1}

COM2: LOAD AIOCOMX {PORT=0x2f8} {INT=3} {NAME=COM2}

COM3: LOAD AIOCOMX {PORT=0x3e8} {INT=4} {NAME=COM3}

COM4: LOAD AIOCOMX {PORT=0x2e8} {INT=3} {NAME=COM4}

Warning! Incorrect settings of COM port may cause your file server to lock up! For more information about COM port setting, please consult NetWare manuals.

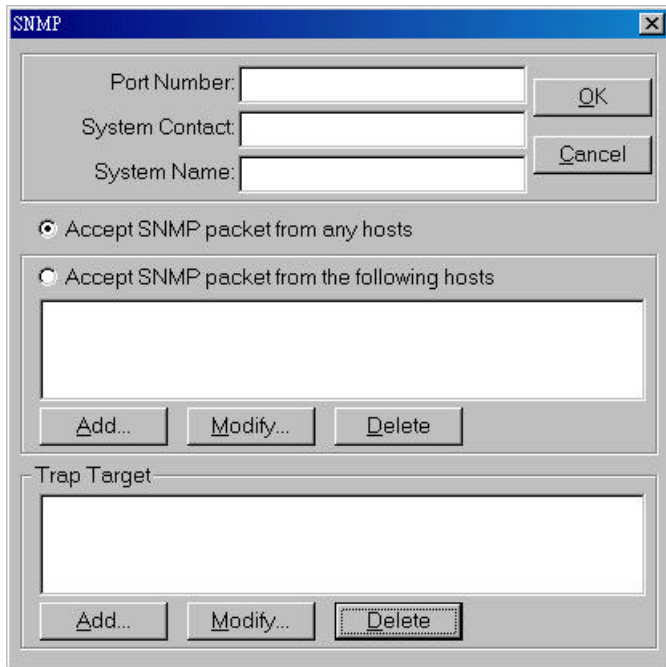


3. Email Function

In menu *Configure->UPS->Actions*. Novell NetWare does not provide the Email function as its default service. An additional third party package for Emailing is required. The protection capabilities that *Bulldog Service for NetWare* provides do not include Email.

4. SNMP Configuration

In the menu *Configure->Network->SNMP* (see the figure below). Items like **Port Number**, **System Contact**, **System Name** and **Trap Target** are stored in the file SYS:\Etc\Traptarg.cfg, the NetWare system default file. You should edit the file directly via any text editor. *Bulldog for NetWare* supports SNMP Traps only, it will not receive any SNMP packet generated by SNMP Get/Set commands from another host.



The image shows a Windows-style dialog box titled "SNMP". It contains several input fields and control elements:

- Three text input fields labeled "Port Number:", "System Contact:", and "System Name:".
- Two buttons on the right: "OK" and "Cancel".
- Two radio button options:
 - Accept SNMP packet from any hosts
 - Accept SNMP packet from the following hosts
- A large empty text area for listing hosts.
- Three buttons below the host list: "Add...", "Modify...", and "Delete".
- A section labeled "Trap Target" with a large empty text area.
- Three buttons below the trap target area: "Add...", "Modify...", and "Delete".

Service and Support

Corporate Headquarters

Belkin Corporation
501 West Walnut Street
Compton • CA • 90220-5221 • USA
Tel: 310.898.1100
Fax: 310.898.1111

Customer Service/Sales:
800.2BELKIN
800.223.5546

Technical Support:
310.898.1100 ext. 2263
800.223.5546 ext. 2263
Fax: 310.604.2089
techsupp@belkin.com
belkin.com/support/tech

United Kingdom

Belkin Components, Ltd.
Express Business Park
Shipton Way • Rushden • NN10 6GL
United Kingdom
Tel: +44 (0) 1933 35 2000
Fax: +44 (0) 1933 31 2000

France

Belkin SAS Components
5 rue du Petit Robinson
78 350 Jouy en Josas • France
Tel: +33 (0) 1 34 58 14 00
Fax: +33 (0) 1 39 46 62 89

Germany

Belkin Components GmbH
Hanebergstrasse 2
80637 • München • Germany
Tel: +49 (0) 89 143405 0
Fax: +49 (0) 89 143405 100

The Netherlands

Belkin Components B.V.
Starparc Building • Boeing Avenue 333
1119 PH Schiphol-Rijk • The Netherlands

Tel: +31 (0) 20 654 7300
Fax: +31 (0) 20 654 7349

European Customer Service/Sales:
00 800 223 55 460
eurosales@belkin.com

European Tech Support:
00 800 223 55 460
eurosupport@belkin.com

Australia

Belkin, Ltd.
7 Bowen Crescent • West Gosford • NSW 2250 Australia
Tel: +61 (0) 2 4372 8600
Fax: +61 (0) 2 4372 8603

Tech Support:
Australia Toll Free 1800 666 040
New Zealand Toll Free 0800 441 913
Singapore Toll Free 800 6161 790
belkin.com/anz

China

Belkin Shanghai Representative Office
Suite 31 • 39/F • Plaza 66
1266 Nanjing West Road
Shanghai • 200040 • China
Tel: 8621-62881747
Fax: 8621-62881748

Customer Service/Sales:
china@belkin.com

Tech Support:
800-820-5816