

# **Belkin Bulldog Plus**

**Shutdown Management Software  
for Mac OS X 10.2**



# Table of Contents

---

- Introduction..... 3
- Installing/Removing Bulldog Plus ..... 4
- User Interface: Bulldog Plus ..... 5
- System Menu ..... 6
- View Menu ..... 9
- Control Menu ..... 10
- Service and Support ..... 12

## Introduction

Congratulations on your purchase of Bulldog Plus to manage your Uninterruptible Power Supply (UPS). Bulldog Plus is designed to provide end users the ability to take proactive steps to protect their equipment from power related damages. Bulldog Plus allows for automatic shutdowns, scheduled shutdowns and a variety of other features that help you manage your system and its peripheral components.

Bulldog Plus provides detailed information about the UPS and its protected equipment. It is easy to install and program, yet has the necessary features to handle all of one's power requirements.

Bulldog Plus runs in the background from the operating system, and communicates with the UPS in order to ensure that your computer and attached components are protected from any power problems.

## Installing/Removing Bulldog Plus

### System Requirements:

**Belkin Bulldog Plus** requires Mac OS X version 10.2 or higher.

### Installing Belkin Bulldog Plus:

1. Copy the Bulldog.tar to your Mac computer.
2. Double click the Bulldog.tar on Aqua interface or type "tar xvf Bulldog.tar" in the Terminal mode to extract it to the Bulldog\_Plus\_3 directory.
3. There is an installation file Bulldog.pkg in the Bulldog\_Plus\_3 directory, execute it to begin the installation procedure. Note that you need to restart the computer to load the UPS daemon after installation.

The **Belkin Bulldog Plus** software is comprised of two modules:

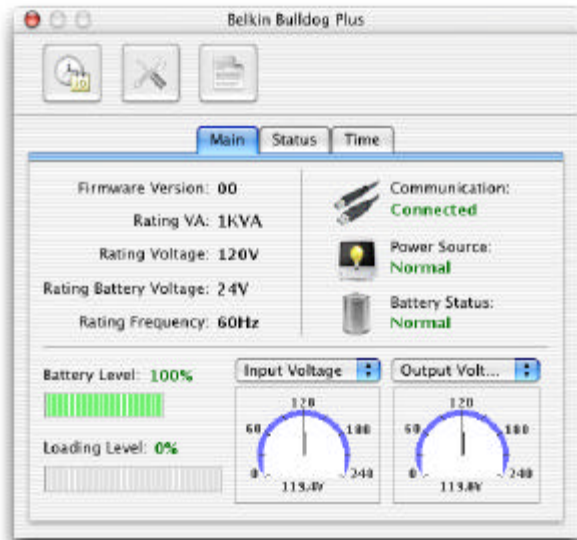
- A UPS Monitoring Module (upsd) which runs as a background process(daemon) and communicates to the UPS.
  - A User Interface Module, Bulldog for Aqua Interface, which enables you to configure Belkin Bulldog Plus through the drop down menus and dialog boxes. It also allows you to monitor the UPS through the Main Screen.
4. After installation, Bulldog Plus program files will be located in the directory */Applications/Bulldog*. We suggest you drag the **Bulldog** icon to the Dock.
  5. Shutdown and reboot your system to start the **Belkin Bulldog Plus** daemon.

### Removing Belkin Bulldog Plus:

1. A shell script file uninstall.command is also provided in Bulldog\_Plus\_2 directory that allows an administrator to stop all processes and remove all files associated with Bulldog Plus.

## User Interface: Bulldog Plus

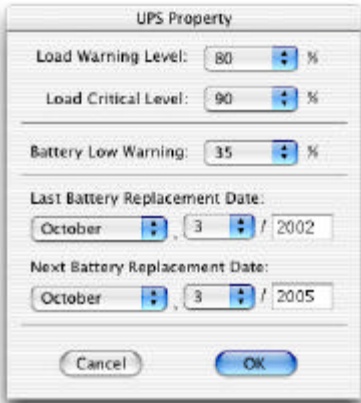
The **Belkin Bulldog Plus** Main Screen is what you will see and work with. The user interface module is comprised of the Main Screen and System, View and Control menu options. It gathers real-time data such as input/output voltage, UPS events and allows you to perform a self-test, preset the OS shutdown delay time, notification intervals and schedule server/computer shutdowns.



## System Menu

The system menu allows you to configure the **Belkin Bulldog Plus** parameters. You select the System menu from the Main Menu bar then a drop down menu appears offering you the following menu options:

### UPS Property



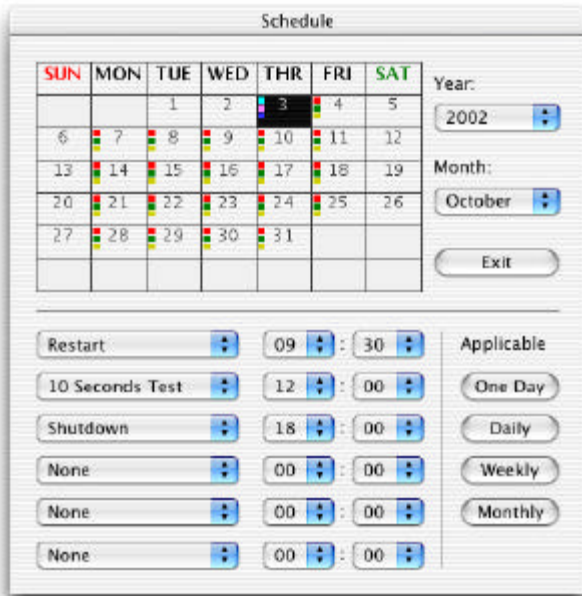
- a. Load Warning Level: You can set a load warning alarm by specifying its value.
- b. Load Critical Level: You can set a load critical alarm by specifying its value.
- c. Battery Low Warning: Allow you to adjust the battery low level. If the measured battery level from the UPS is lower than the assigned value we'll treat it as a low battery event.
- d. Last Battery Replacement Date: Indicates the last battery replacement date.
- e. Next Replacement Date: Indicates the date of the next battery replacement.

### Log Management

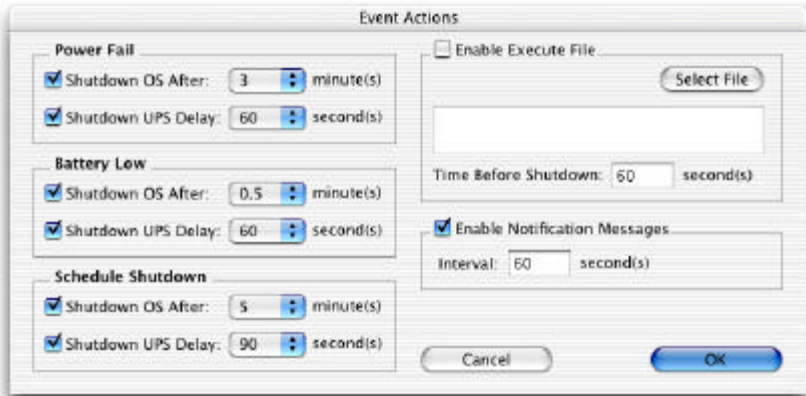
Allows **Belkin Bulldog Plus** to preserve the assigned number of entries in event log.

### Schedule

This function allows you to shutdown your MAC computer and UPS, restart the UPS and test the UPS by the specified time. Settings are based on a specified day, daily, weekly or monthly and up to a period of 2 years.



## Event Actions



This menu option allows you to adjust the actions taken by Bulldog Plus during the following power events:

- a. **Power Fail:** This option allows you to adjust the OS and UPS shutdown delay time taken by Bulldog Plus during a power failure. Shutdown will start in accordance to the specified number of minutes after a power failure setting.
- b. **Battery Low:** This option allows you to adjust the OS and UPS shutdown delay time taken by Bulldog Plus during a low-battery event. Shutdown will start in accordance to the specified number of minutes after a battery low setting.
- c. **Schedule Shutdown:** This option allows you to adjust the OS and UPS shutdown delay time taken by Bulldog Plus when it reaches the schedule time.
- d. **Enable Execute File:** Allows you to run a shell script or application before computer shutdown.

## Close

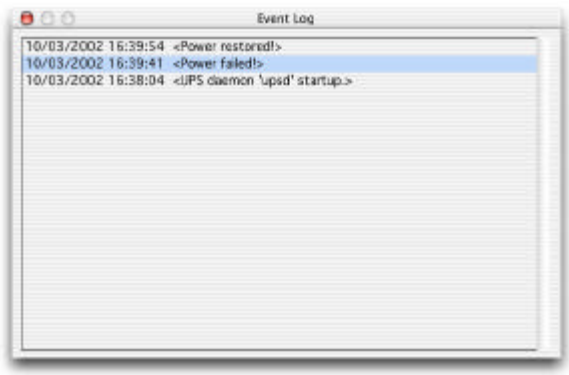
Selecting this option causes you to exit the **Belkin Bulldog Plus**. The “upsd” continues to monitor the UPS.



## View Menu

### Event Log

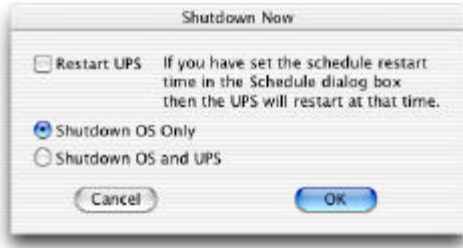
This menu offers you the capability of viewing past events. **Belkin Bulldog Plus** logs the power events and system operating events for users inspection. This screen lists the most recently logged events by date and time of occurrence. By dragging the scroll bar to view the entire log.



## Control Menu

### Shutdown Now

Lets you shutdown your Mac OS, UPS or restart the UPS on the restart time you have established in the Schedule menu.



### Cancel Shutdown

Cancels the ongoing shutdown procedure.

### UPS Audible Alarm On

Enables the UPS buzzer.

### UPS Audible Alarm Off

Mute the UPS buzzer alarm.

### 10 Seconds Test

The UPS switches to backup mode and its output power is supplied by the battery for 10 seconds.

### Deep Battery Test

The UPS switches to backup mode and its output power is supplied by the battery until battery low.

### Cancel Test

This menu allows you to stop the “self-test” of the UPS immediately.

## **Voltage Sensitivity**

Allows for the adjustment of the UPS voltage sensitivity.

## **Transfer Voltage**

Change the low transfer voltage and high transfer voltage. You can use this function to let your UPS suit local power environment.

- a. Low Transfer Voltage: If the utility power voltage is lower than the assigned value, the UPS will switch to backup. The output power is supplied from battery.
- b. High Transfer Voltage: If the utility power voltage is higher than the assigned value, the UPS will switch to backup. The output power is supplied from battery.

## Service and Support

### Corporate Headquarters

Belkin Corporation

501 West Walnut Street

Compton • CA • 90220-5221 • USA

Tel: 310.898.1100

Fax: 310.898.1111

Customer Service/Sales:

800.2BELKIN

800.223.5546

Technical Support:

310.898.1100 ext. 2263

800.223.5546 ext. 2263

Fax: 310.604.2089

[techsupp@belkin.com](mailto:techsupp@belkin.com)

[belkin.com/support/tech](http://belkin.com/support/tech)

### United Kingdom

Belkin Components, Ltd.

Express Business Park

Shipton Way • Rushden • NN10 6GL

United Kingdom

Tel: +44 (0) 1933 35 2000

Fax: +44 (0) 1933 31 2000

## France

Belkin SAS Components  
5 rue du Petit Robinson  
78 350 Jouy en Josas • France  
Tel: +33 (0) 1 34 58 14 00  
Fax: +33 (0) 1 39 46 62 89

## Germany

Belkin Components GmbH  
Hanebergstrasse 2  
80637 • München • Germany  
Tel: +49 (0) 89 143405 0  
Fax: +49 (0) 89 143405 100

## The Netherlands

Belkin Components B.V.  
Starparc Building • Boeing Avenue 333  
1119 PH Schiphol-Rijk • The Netherlands  
Tel: +31 (0) 20 654 7300  
Fax: +31 (0) 20 654 7349

European Customer Service/Sales:  
00 800 223 55 460  
[eurosales@belkin.com](mailto:eurosales@belkin.com)

European Tech Support:  
00 800 223 55 460  
[eurosupport@belkin.com](mailto:eurosupport@belkin.com)

## Australia

Belkin, Ltd.

7 Bowen Crescent • West Gosford • NSW 2250 Australia

Tel: +61 (0) 2 4372 8600

Fax: +61 (0) 2 4372 8603

Tech Support:

Australia Toll Free 1800 666 040

New Zealand Toll Free 0800 441 913

Singapore Toll Free 800 6161 790

[belkin.com/anz](http://belkin.com/anz)

## China

Belkin Shanghai Representative Office

Suite 31 • 39/F • Plaza 66

1266 Nanjing West Road

Shanghai • 200040 • China

Tel: 8621-62881747

Fax: 8621-62881748

Customer Service/Sales:

[china@belkin.com](mailto:china@belkin.com)

Tech Support:

800-820-5816