



belkin.com

Connecting your Bluetooth Mouse to Mac OS X v.10.2.8 and v.10.3



Use with Mac OS X v 10.2.8 and 10.3

Connecting the Bluetooth Mouse to Mac OSX, by Belkin

Before you Begin:

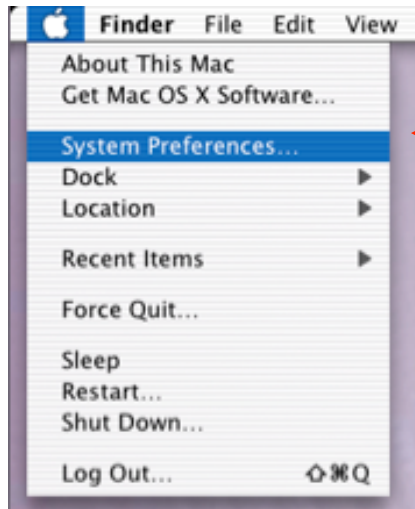
1. Make sure you have Mac OSX ver. 10.2.8 or higher installed on your computer.

Note: The Bluetooth device software and driver is supplied entirely by Apple. You may download the latest updates from www.apple.com

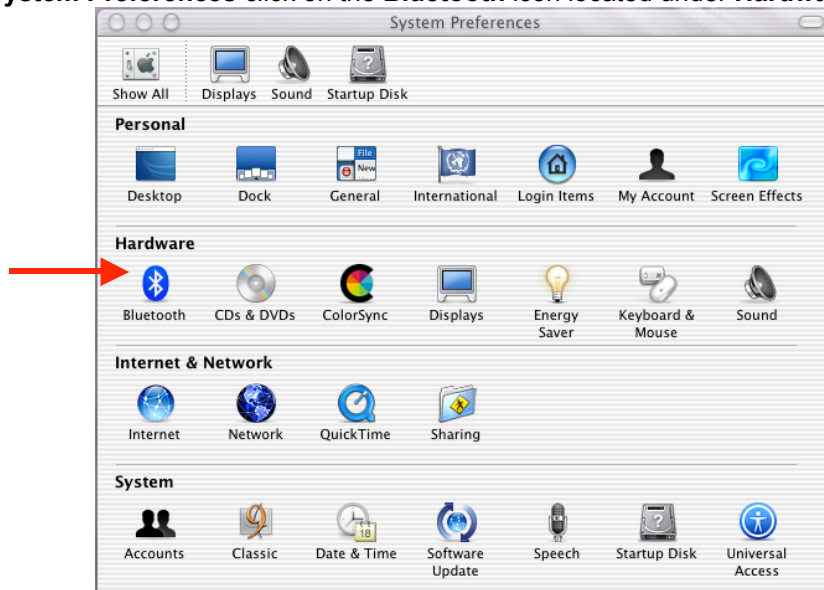
Make sure the Belkin Bluetooth USB Adapter is connected to an available USB port on your Macintosh.

Section: 1 Setting Bluetooth Preferences

1. Access **Apple Menu** and select **System Preferences**.

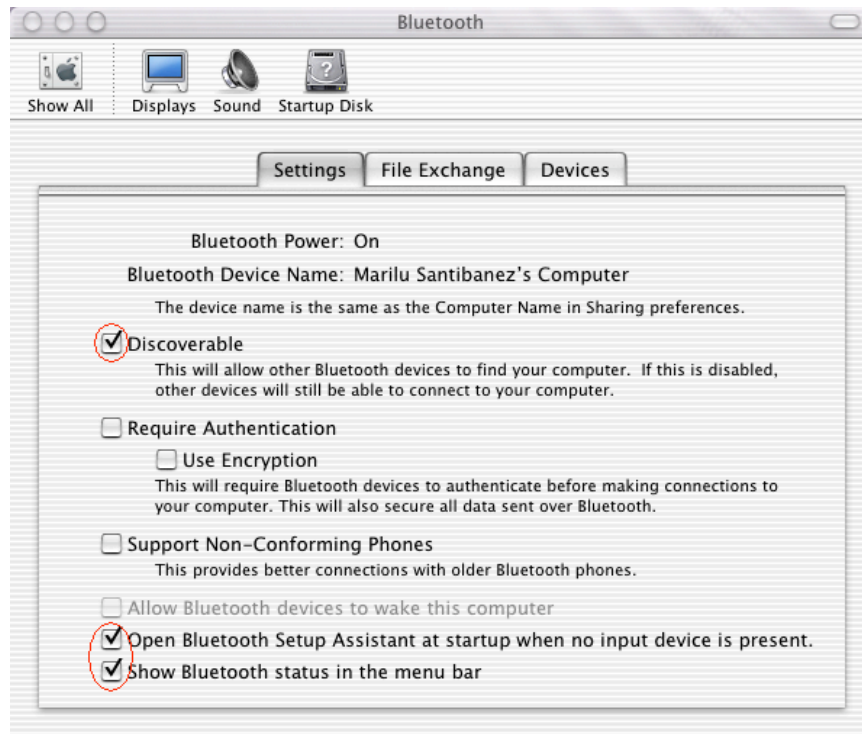


2. From **System Preferences** click on the **Bluetooth** icon located under **Hardware**.



3. In the **Settings** tab, select the options circled in red below, and uncheck **Require Authentication**.

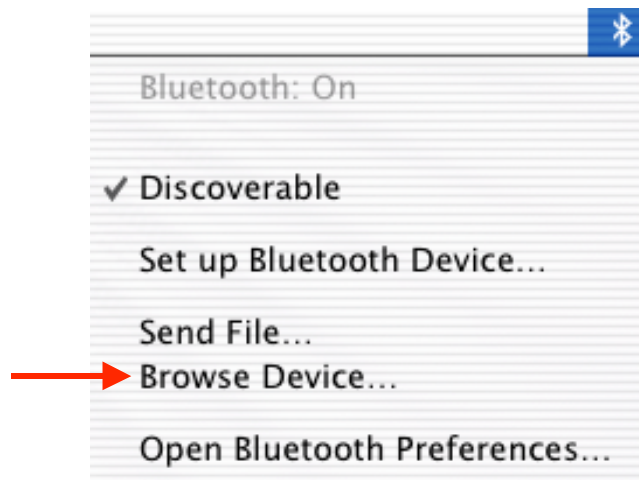
Connecting the Bluetooth Mouse to Mac OSX, by Belkin



4. Close the Window and return to your desktop.

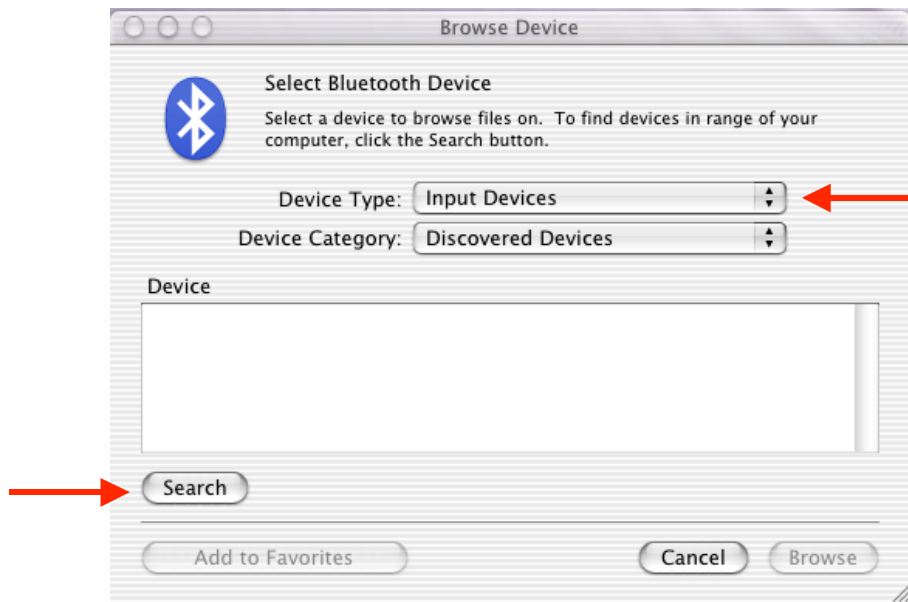
Section: 2 Browsing for the device

5. Turn your mouse over and push the connect button for 2 seconds. You should see the Scroll-wheel light up and blink quickly.
6. From your desktop, click on the Bluetooth icon located on the Upper right side of your menu bar.
7. Select **Browse Device...**

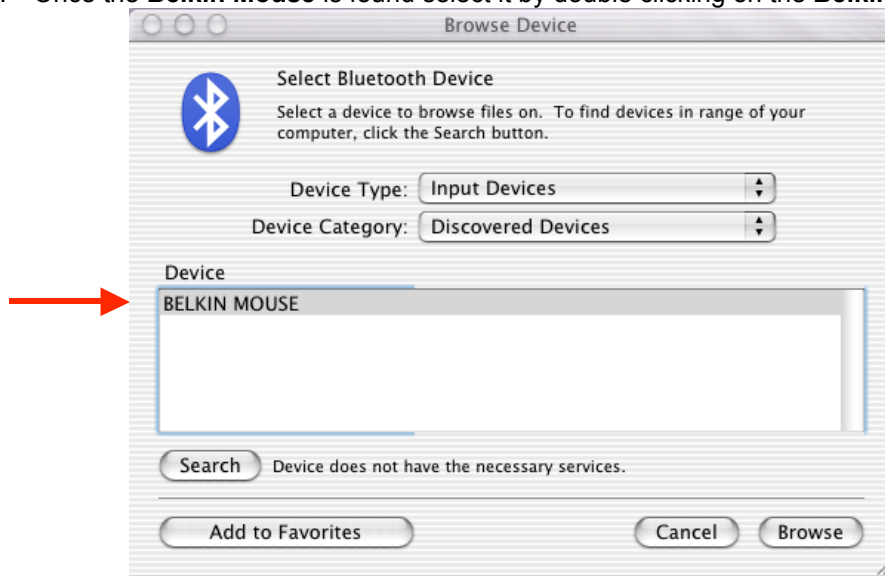


8. Next to **Device Type** select **Input Devices** and click on the **Search** button.

Connecting the Bluetooth Mouse to Mac OSX, by Belkin



9. Once the **Belkin Mouse** is found select it by double clicking on the **Belkin Mouse** name.

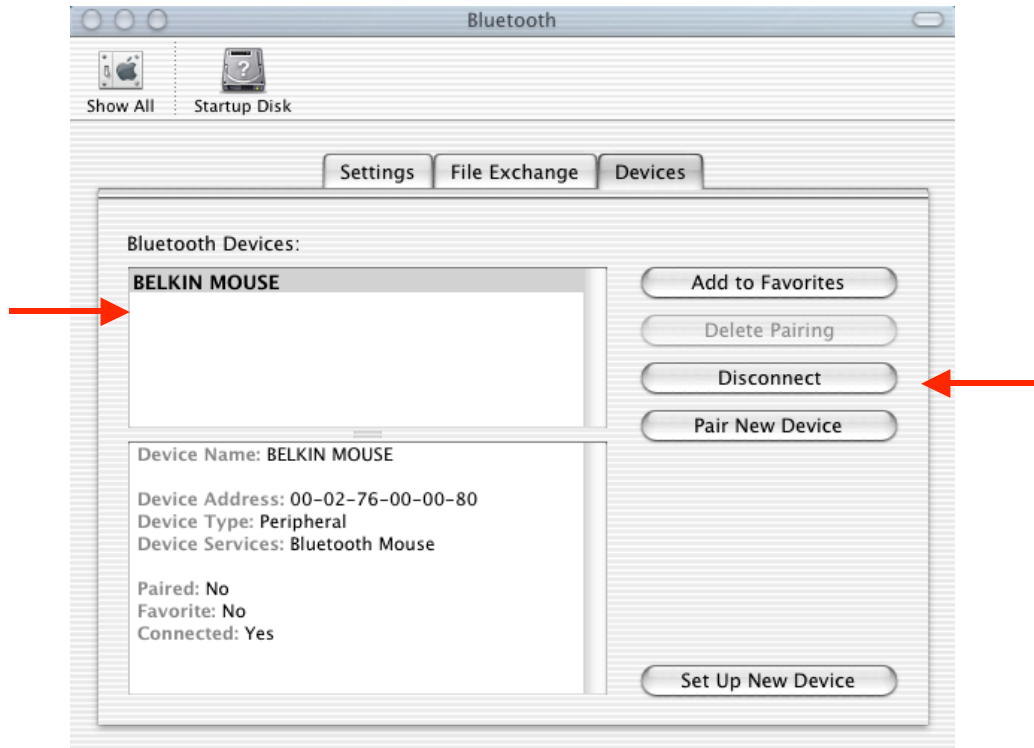


10. Begin moving the mouse to verify that it is connected.

Note: Ignore the message that the states “Device does not have the necessary Services.”

Connecting the Bluetooth Mouse to Mac OSX, by Belkin

You may verify your Bluetooth connections by viewing the **Device Tab** under **Bluetooth System Preferences**.



To disconnect the Mouse, Select the **Belkin Mouse** and click on **Disconnect**.