



belkin.com

Belkin Corporation

501 West Walnut Street
Compton • CA • 90220 • USA
Tel: 310.898.1100
Fax: 310.898.1111

Belkin Components, Ltd.

Express Business Park • Shipton Way
Rushden • NN10 6GL • United Kingdom
Tel: +44 (0) 1933 35 2000
Fax: +44 (0) 1933 31 2000

Belkin, Ltd.

7 Bowen Crescent • West Gosford
NSW 2250 • Australia
Tel: +61 (0) 2 4372 8600
Fax: +61 (0) 2 4372 8603

Belkin Tech Support

US: 310.898.1100 ext. 2263
800.223.5546 ext. 2263
Europe: 00 800 223 55 460
Australia: 1800 666 040

P74068-A

© 2003 Belkin Corporation. All rights reserved. All trade names are registered trademarks of respective manufacturers listed. The Bluetooth name and the Bluetooth trademarks are owned by Bluetooth SIG, Inc., and are used by Belkin Corporation under license. Mac, Mac OS, and Apple are trademarks of Apple Computer, Inc., registered in the U.S. and other countries.



Bluetooth™ USB Adapter

Connect your peripherals and computing devices, without cables



Quick Installation Guide

F8T001 ver. 2

F8T003 ver. 2



INTRODUCTION

PC System Requirements

- PC-compatible computer, CPU speed of 200MHz or above
- Memory: 64MB or above, 128MB recommended
- One available USB port, USB 1.1 standard
- Windows® 98 SE, Me, 2000, and XP

Mac® System Requirements

- One available USB port, USB 1.1 standard
- Mac OS® X v10.2 and higher*

Product Contents

- *Bluetooth* USB Adapter
- CD-ROM for installation software and documentation
- User Manual
- Quick Installation Guide



*Mac OS X driver and software provided by Apple®.

STEP 1: SOFTWARE SETUP

Software Setup for Windows 98 SE, Me, 2000, and XP

To install the software for the USB Adapter, follow the instructions below:

Note: The installation process for Windows XP may look slightly different from Windows 98 SE, Me, and 2000.

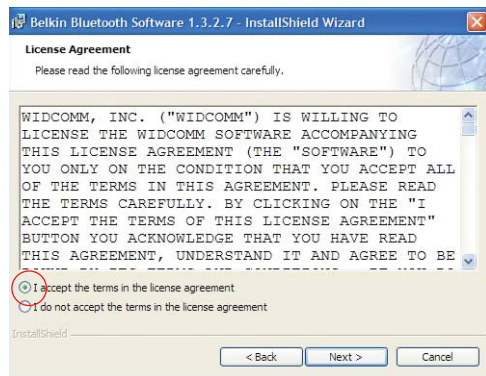
Note: Do not insert the USB Adapter into the USB port prior to software installation.

1. Insert the software installation CD-ROM into the PC's CD-ROM drive.
2. The "Software InstallShield Wizard" window appears. Click on "Next" to begin the installation process.

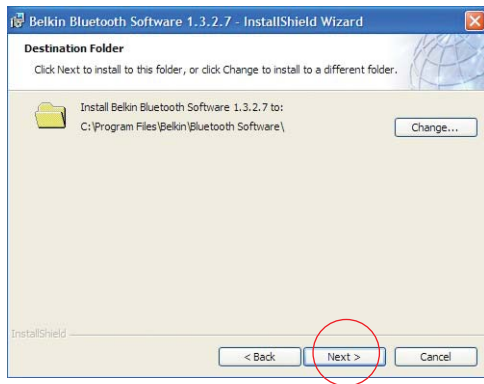


STEP 1: SOFTWARE SETUP

3. Choose "I accept the terms in the license agreement" to accept the license agreement. Click on "Next" to continue.

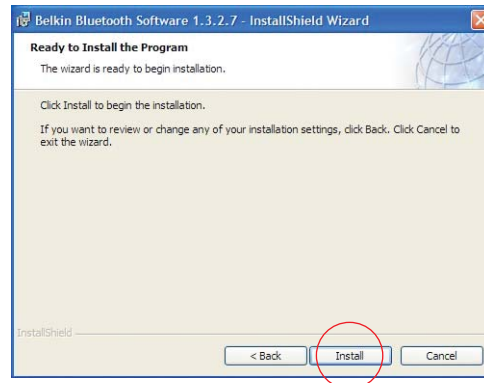


4. Specify the location where the software files will be installed on your hard drive. It is recommended that you install the software in the default directory "C:\Program Files\belkin\Bluetooth\Software\". Click on "Next" to continue.



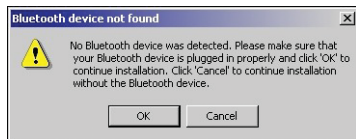
STEP 1: SOFTWARE SETUP

5. Confirm that the device software is ready to be installed and click on "Install".
6. The InstallShield Wizard will begin to install the Belkin *Bluetooth* Software. This may take several minutes.



STEP 1: SOFTWARE SETUP

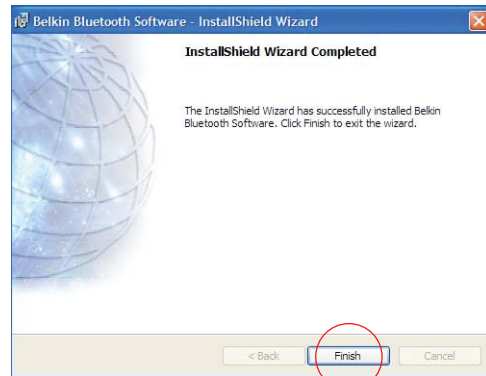
7. During the installation process you may be prompted to insert your USB Adapter. If your USB Adapter is not plugged into your computer at this time, you may insert it into an available USB 1.1-compliant port on your desktop or notebook computer, then click "OK" to continue. Click on "Cancel" to continue installation without the *Bluetooth* device inserted. Refer to the "Hardware Installation" section of this User Manual for instructions for installing the hardware.



Note: If at any time during the installation process you receive a "Driver Signature Notice", click "OK" to continue the installation process.

STEP 1: SOFTWARE SETUP

8. Confirm the completion of the software installation; click "Finish" and restart the system if prompted to do so.



STEP 2: HARDWARE SETUP

Hardware Setup for Windows 98 SE, Me, 2000, and XP

Follow these instructions to install your USB Adapter on your PC.

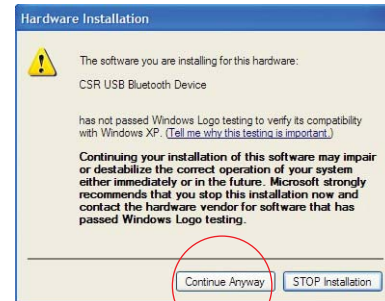
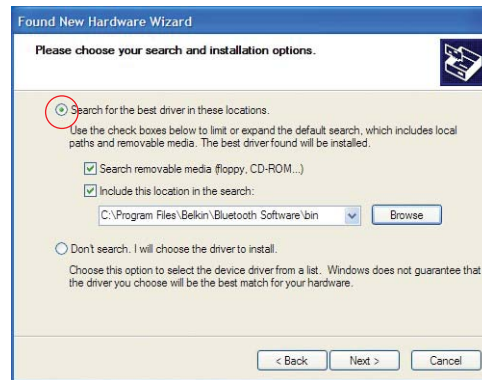
Note: Your USB Adapter is sensitive to static electricity, which can damage its delicate electrical components. To protect your device, always touch the metal chassis of your computer before handing the USB Adapter. This will ground any potential electrostatic discharge. Avoid touching the metal connector when handling the USB Adapter. Dry weather conditions or walking across carpeted floors may cause you to acquire an electrostatic charge.

1. Connect the USB Adapter directly to an available USB A-type connector on your desktop or notebook computer. Your system should register a new USB device found.
2. Choose "Install from a list or specific location"; then click "Next".



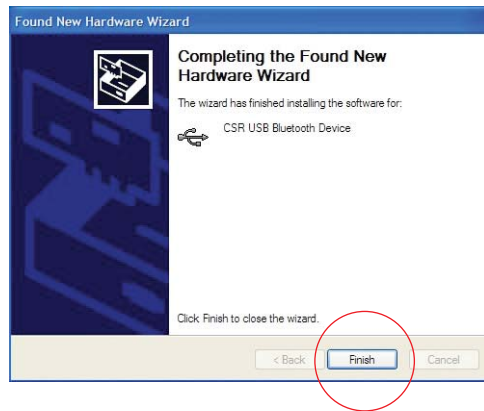
STEP 2: HARDWARE SETUP

3. Browse for the location of the device driver "\Program Files\Belkin\Bluetooth\Software\bin\" then click "Next".
4. If you receive the following "Hardware installation notice", click on "Continue Anyway" to continue with the installation process.



STEP 2: HARDWARE SETUP

5. A window will appear that confirms the completion of the hardware installation; click on “Finish” to complete the installation process.



STEP 3: UNINSTALLING THE SOFTWARE

Uninstalling the Software for Windows 98 SE, Me, 2000, and XP

Follow these instructions to uninstall your USB Adapter on your PC.

1. Insert the CD-ROM included with your USB Adapter.
2. This “InstallShield Wizard” should automatically load. If it does not load, explore the CD and run the “Setup.exe” file.
3. The “InstallShield” window should now appear. Click “Next” to continue with the uninstall process.