



# FireWire CardBus Adapter Installation Manual



P73366-A

F5U512

## Introduction and System Requirements

Thank you for purchasing the Belkin FireWire CardBus Adapter. Now you can add two 400 Mbps FireWire ports to your Windows 98 SE, Windows 2000, or Windows Me computer system and enjoy the blazing speed and Plug-and-Play ease of next generation FireWire devices.

### Features:

- Two external 400 Mbps IEEE 1394 ports
- OHCI 1.0 compliant
- IEEE 1394a compliant

### Minimum Recommended System Requirements:

- 266 Mhz Pentium® II
- 32 Megabytes RAM
- One Free 32-bit, Type II CardBus slot
- Windows® 98 SE, Windows 2000, or Windows Me

### VideoWave™ III SE Minimum Recommended System Requirements:

- 266 Mhz Pentium II
- 45 MB free hard disk space for program installation, 1 GB workspace
  - 64 MB RAM
  - SVGA screen with 4 MB RAM
  - Windows 98 SE, Windows 2000, or Windows Me

### Package Contents:

- Belkin FireWire CardBus Adapter
- MGI® VideoWave III SE/PhotoSuite III Installation CD
- Registration Card
- This Users Manual

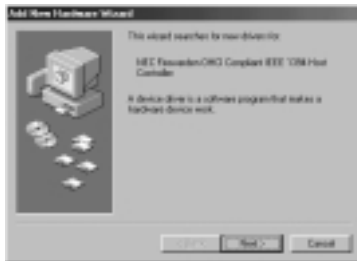
## Installation

### Hardware Installation

1. Examine your laptop computer and locate the CardBus slot(s).
2. Insert the Belkin FireWire CardBus Adapter into a free 32-bit Type II CardBus slot.
3. Apply power to the laptop and let Windows start normally.

### Windows 98 Second Edition Driver Installation

1. When Windows 98 SE has finished loading, the “New Hardware Wizard” will launch and display a window which identifies the CardBus Adapter as a “NEC Firewarden OHCI-Compliant IEEE 1394 Host Controller”. Click “Next”.



## Installation (continued)

2. Select “Search for the Best Driver for Your Device (Recommended)”. Click “Next”.

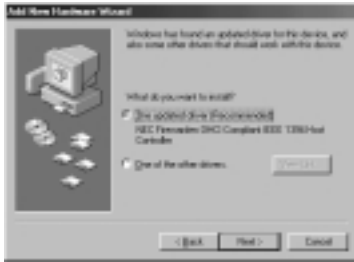


3. Leave all boxes unchecked. Click “Next”.

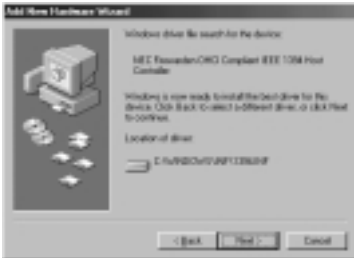


## Installation (continued)

- The “New Hardware Wizard” will now prompt you to select the driver you wish to install. Select “The Updated Driver (Recommended)”. Click “Next”.

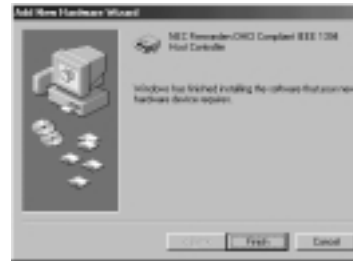


- The “New Hardware Wizard” will now locate and install the proper driver. Click “Next”.



## Installation (continued)

- You will now be prompted to insert your Windows 98 installation CD.
- Hardware installation is now complete. Click “Finish”.



### Windows 2000 Driver Installation

- When Windows 2000 has finished loading, the “New Hardware Wizard” will launch and display a window which identifies the CardBus Adapter as a “NEC Firewarden OHCI-Compliant IEEE 1394 Host Controller”. Windows will search its driver database and automatically install the correct driver. You will now be prompted to restart your computer. Installation is now complete.

## Installation (continued)

### Windows Me Driver Installation

1. When Windows Me has finished loading, the “New Hardware Wizard” will launch and display a window which identifies the CardBus Adapter as a “NEC Firewarden OHCI-Compliant IEEE 1394 Host Controller”. Windows will search its driver database and automatically install the correct driver. You will now be prompted to restart your computer. Installation is now complete.

### Software Installation

1. Insert the CardBus Adapter Installation CD into your CD-ROM drive. The installation program will automatically load and display a menu from which you may choose to install MGI VideoWave III SE, and/or MGI PhotoSuite III. A comprehensive digital version of the VideoWave III SE users manual is also provided for your convenience.

## Installation (continued)

### IEEE 1394/FireWire Device Troubleshooting

1. Be sure to turn your camcorder on before starting MGI VideoWave so that the software will recognize your camcorder.
2. Plug your power supply into any hard drive or other device that requires power, before you connect to your laptop.



# Information

## FCC Statement

### DECLARATION OF CONFORMITY WITH FCC RULES FOR ELECTROMAGNETIC COMPATIBILITY

We, Belkin Components, of 501 West Walnut Street, Compton CA 90220, declare under our sole responsibility that the product:

F5U512

to which this declaration relates:

Complies with Part 15 of the FCC Rules. Operation is subject to the following two conditions: (1) this device may not cause harmful interference, and (2) this device must accept any interference received, including interference that may cause undesired operation.

## CE Declaration of Conformity

We, Belkin Components, declare under our sole responsibility that the F5U512, to which this declaration relates, is in conformity with Generic Emissions Standard EN50081-1 and with Generic Immunity Standard EN50082-1 1992.

## Belkin Components Limited Lifetime Product Warranty

Belkin Components warrants this product against defects in materials and workmanship for its lifetime. If a defect is discovered, Belkin will, at its option, repair or replace the product at no charge provided it is returned during the warranty period, with transportation charges prepaid, to the authorized Belkin dealer from whom you purchased the product. Proof of purchase may be required.

This warranty does not apply if the product has been damaged by accident, abuse, misuse, or misapplication; if the product has been modified without the written permission of Belkin; or if any Belkin serial number has been removed or defaced.

THE WARRANTY AND REMEDIES SET FORTH ABOVE ARE EXCLUSIVE IN LIEU OF ALL OTHERS, WHETHER ORAL OR WRITTEN, EXPRESSED OR IMPLIED. BELKIN SPECIFICALLY DISCLAIMS ANY AND ALL IMPLIED WARRANTIES, INCLUDING, WITHOUT LIMITATION, WARRANTIES OF MERCHANTABILITY AND FITNESS FOR A PARTICULAR PURPOSE.

No Belkin dealer, agent, or employee is authorized to make any modification, extension, or addition to this warranty.

BELKIN IS NOT RESPONSIBLE FOR SPECIAL, INCIDENTAL, OR CONSEQUENTIAL DAMAGES RESULTING FROM ANY BREACH OF WARRANTY, OR UNDER ANY OTHER LEGAL THEORY, INCLUDING BUT NOT LIMITED TO LOST PROFITS, DOWNTIME, GOODWILL, DAMAGE TO OR REPROGRAMMING, OR REPRODUCING ANY PROGRAM OR DATA STORED IN OR USED WITH BELKIN PRODUCTS.



**belkin.com**

***Belkin Components***

501 West Walnut Street  
Compton • CA • 90220 • USA  
Tel: 310.898.1100  
Fax: 310.898.1111

Tech Support  
Tel: 800.223.5546 ext. 2263  
e-mail: techsupp@belkin.com

***Belkin Components, Ltd.***

Unit 13 • Gatelodge Close • Round Spinney  
Northampton • Northants • NN3 8RX • United Kingdom  
Tel: +44 (0) 1604678300  
Fax: +44 (0) 1604678330

e-mail: eurosupport@belkin.com

***Belkin Components B.V.***

Diamantlaan 8 • 2132 WV  
Hoofddorp • The Netherlands  
Tel: +31 (0) 235698765  
Fax: +31 (0) 235612694

e-mail: eurosupport@belkin.com