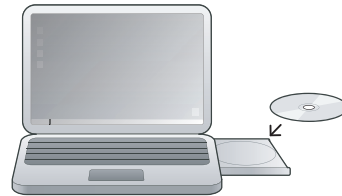


Setup Overview

- Step 1** Insert CD and run installer
- Step 2** Connect Adapter to computer
- Step 3** Complete Windows® OS wizard (if necessary; note: it automatically starts if it is necessary)
- Step 4** Connect to a wireless network



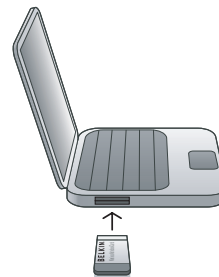
Step 1 – Insert CD and run installer

Insert the setup disc into your notebook's CD drive. When the installer appears, click on "Install".

The installer may take 15–20 seconds to appear. If it does not appear by then, find the "My Computer" icon on your desktop and double-click it; then, double-click the icon for the CD. Open the "Files" folder and double-click "Setup.exe".

The installer loads the necessary drivers onto your computer. Click "Next" on each screen as prompted. On the last screen, click "Finish" to close the installer.

If at any time during the install a warning appears that the software has not passed Windows® logo testing, it is safe to click on the "Continue anyway" button to proceed. This software is designed to run on Windows.



Step 2 – When prompted, insert the Card

During the install process, you will be prompted to insert your Card. First make sure the Card's label side is UP.

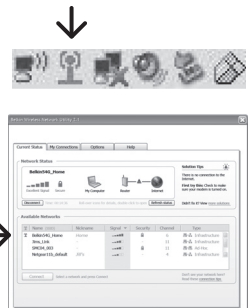
Insert it into your computer's CardBus slot, pushing it firmly until it stops. The power light on the top of the Card will turn on.



Step 3 – Go through hardware wizard

The Windows “Found New Hardware” wizard appears. Select the “Install the software automatically (Recommended)” option and click “Next” to proceed.

On the next screen, click “Finish” to close the wizard. Installation is now complete.



Step 4 – Connect to a wireless network

A small signal-indicator icon appears in your system tray (bottom right corner of most screens). Double-click on it to bring up the Wireless Client Utility.

Look in the “Available Networks” list for the router or network to which you’d like to connect, and double-click on its name.

Windows Vista™ Users: Connect to a wireless network through the Network and Sharing Center, accessible through your computer’s Control Panel.

Support

Belkin provides free technical support via phone and the Web. However, we encourage you to attempt steps 1 and 2 before contacting us. The Setup Assistant has built-in intelligence to help diagnose and fix common problems.

If you try this and still have trouble, please contact Belkin Support.

UK

<http://www.belkin.com/uk/>
Click on Support Centre >
Networking Support
0845 - 607 77 87