

## IMPORTANT!

This Guide refers to the following Products:



F8T001/F8T003



F8T008/F8T009



F8T012/F8T013



## Configuring Your Bluetooth Device Under Mac OSX

Please read the following carefully;

### Synopsis:

This Guide is designed to inform you how Belkin Bluetooth Adapters function under the Mac Operating System.

The Guide assumes a general understanding of the Operating System and navigation.

### Requirements:

In order to follow the instructions overleaf you will need at least the following equipment;

One of the following Belkin Bluetooth Adapters;

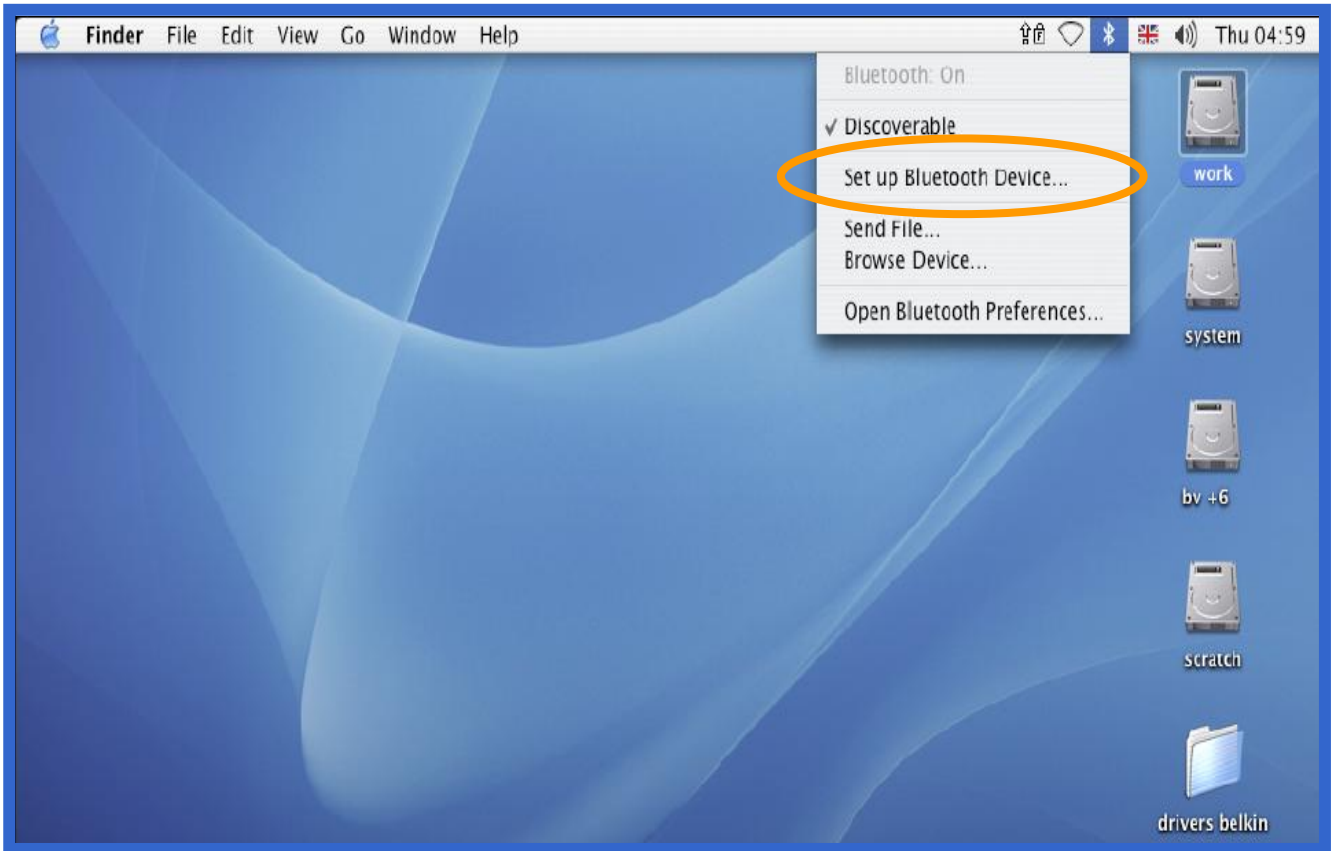
- F8T001
- F8T003
- F8T008
- F8T009
- F8T012
- F8T013
- F8T012xx1
- F8T013xx1

An Apple Computer with Mac OS 10.2 or later

## Configuring Your Bluetooth Device Under Mac OSX

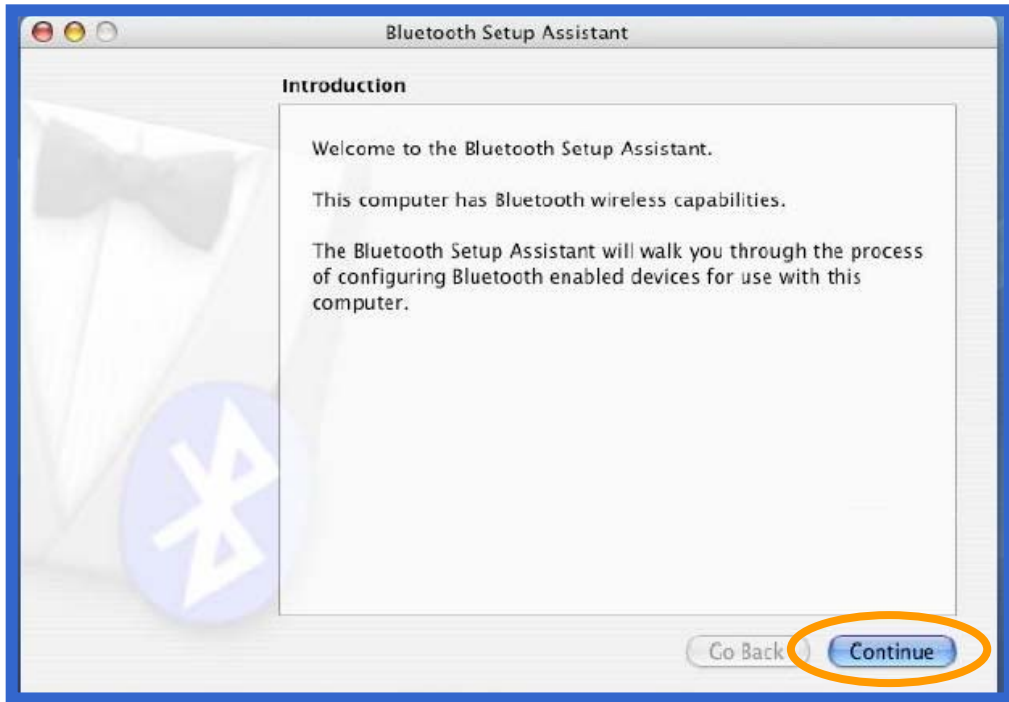
Belkin Bluetooth Devices do not require Drivers to function under Mac OS. All you need to do is plug the Device in to a free USB Port and the Bluetooth Icon should appear in the top right-hand corner of the screen.

Please follow the steps shown in the Screenshots below to configure your Bluetooth connection.



Click the Bluetooth Icon in the top right-hand corner of the Screen. Click 'Set Up Bluetooth Device' to open the Bluetooth Setup Assistant, then click 'Continue'.

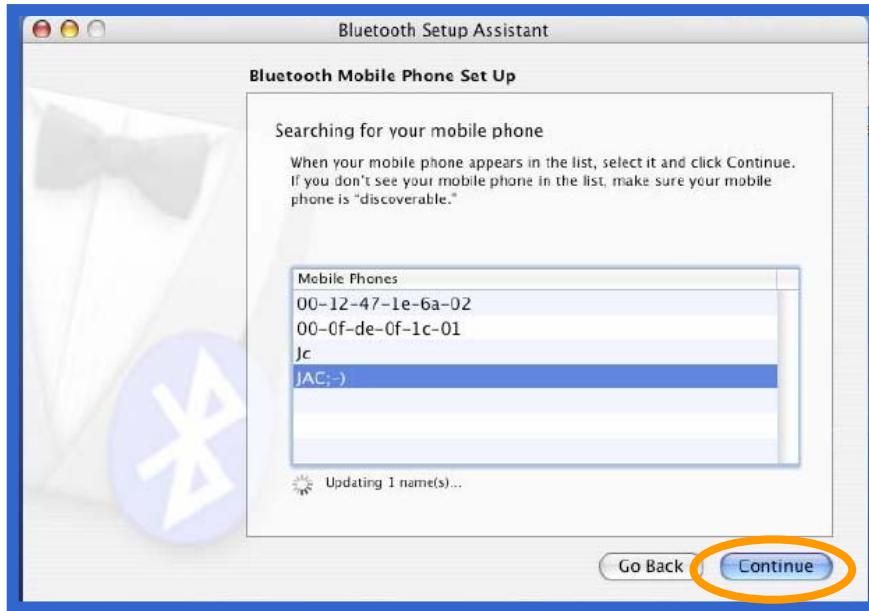
Once the Setup Assistant starts you will need to simply click on 'Continue' to proceed.



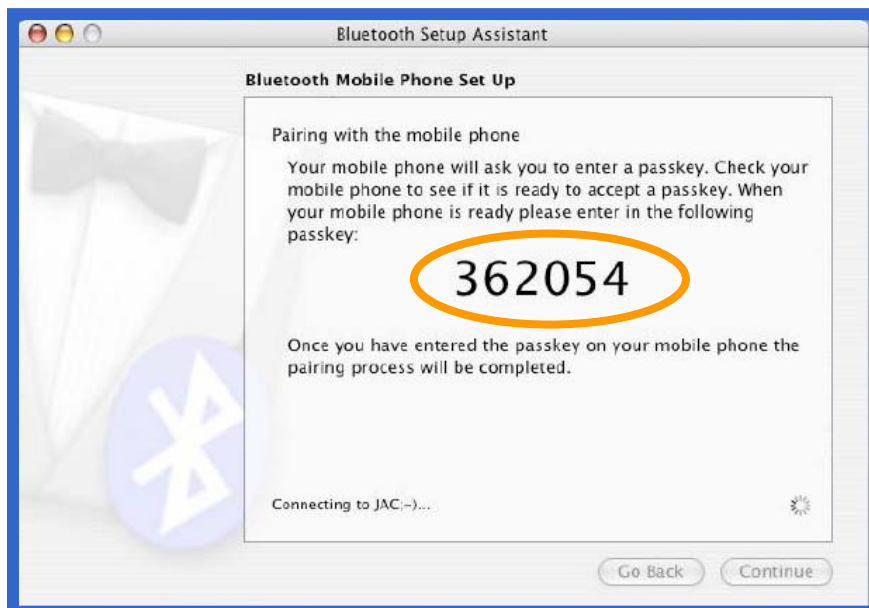
Select the type of Device that you wish to connect to and click on 'Continue'.



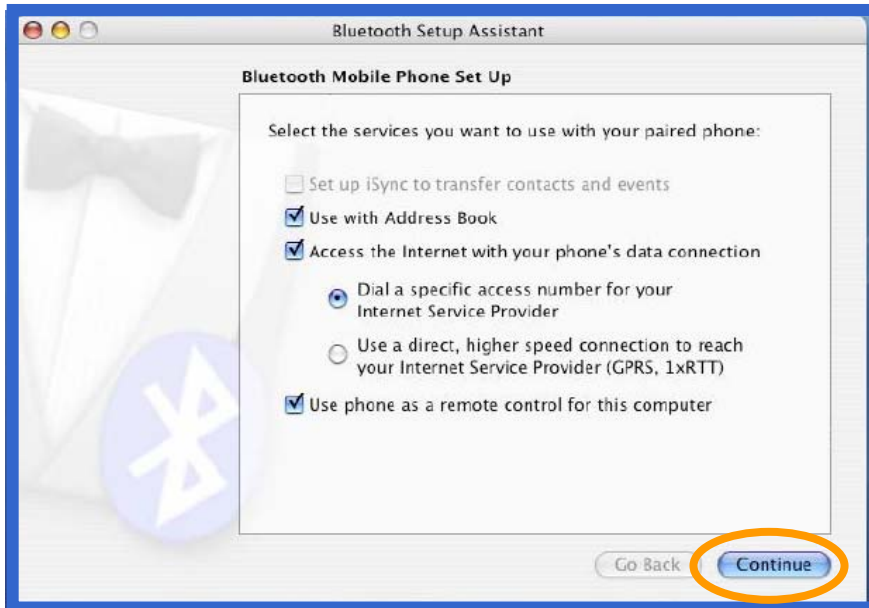
You will then see all Bluetooth Devices of the type you selected in range. Choose the Device that you wish to connect to and click 'Continue'.



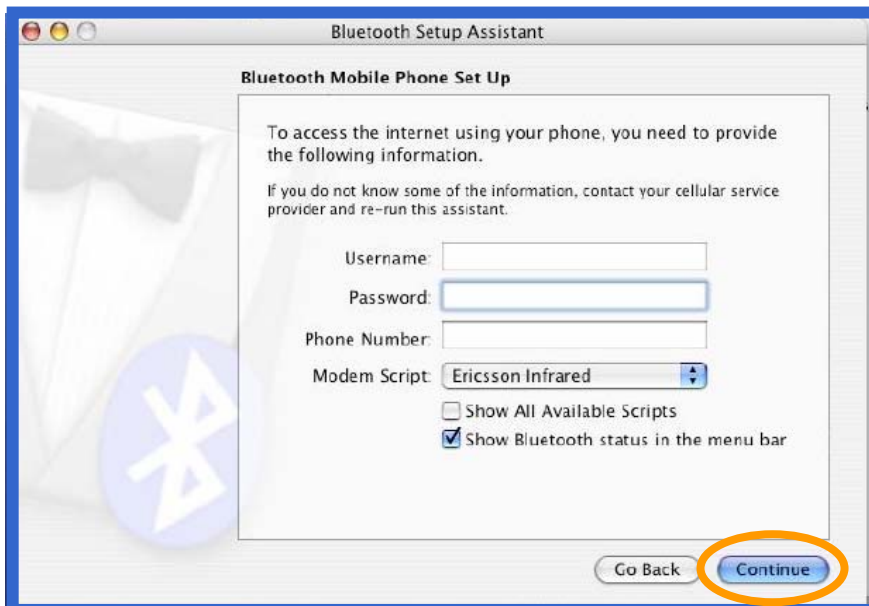
If the Bluetooth Device that you wish to connect to, has a Keypad of some sort then you will see a Passkey on the Screen. When prompted, enter the same Passkey on the other Device. Some Devices such as Bluetooth Headsets or Printer Adapters (anything that doesn't have a Keypad) have a pre-defined Passkey which is to be found in the Documentation of the Device, and which you will need to enter on the Computer at this point.



In this Screen you can configure the Services that you can use with the Device.



Should you wish to connect to the Internet using a Dial-Up Connection, then simply configure it as shown.



If you wish to use the phone to connect to the internet, you will need to enter a Username, password and the telephone number supplied by your ISP, and press "Continue".

You have now finished the Configuration. Simply click on 'Quit' to exit.

