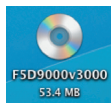


Setup Overview

Step

1

Insert CD and run installer



Step 1 – Insert CD and run installer

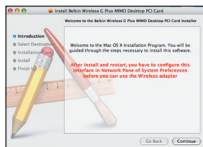
Insert the setup disc into your Mac computer's CD drive. When the CD icon appears, click on it.

Click on the folder for your Mac OS® version. Then, click on the ".pkg" file to start installation.

Step

2

Finish installer, restart computer



Step 2 – Finish installer, restart computer

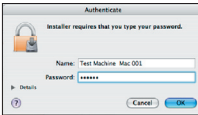
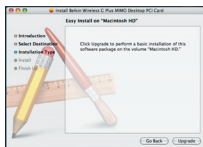
Follow the installer instruction. Select a destination volume to install.

Enter your password when prompted. Then, click "Restart" to finish installing the software.

Step

3

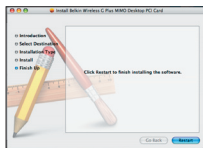
Insert Card into Mac® computer, activate the Card

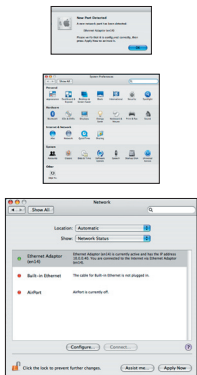


Step

4

Run utility, connect to a wireless network





Step 3 – Insert Card into PCI slot, activate the Card

After the computer has rebooted, insert your Card into your computer's PCI slot, pushing it firmly until it stops.

Your desktop computer has a removable cover on one side. Find it and remove the screws (if any) holding it in place. Touch any metal part of the case to discharge static electricity, to avoid damage to your Card or PC.

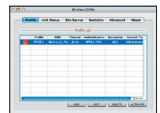
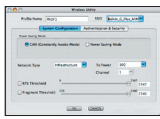
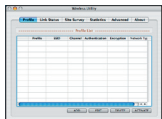
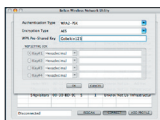
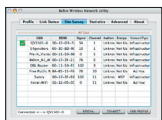
Find an empty PCI expansion slot inside your computer's case (the slots are situated near the back of the computer). Each empty slot has a metal cover-plate that secures it on the rear panel of the computer. Remove it and the screw that holds it in place (if any), and set aside the screw in a safe place. You will need it to secure the Card's cover-plate.

Press the Card firmly into the slot. Apply pressure as needed until the connector is fully seated. If the cover plate included a screw that you set aside (above), use it to secure the Card's cover-plate.

Now, look at the rear of your PC. Connect the included antenna cable to the port on the Card. Place the antenna in a high, unobstructed location, such as on a shelf or desk.

Replace your computer's cover and power it back on.

Click the Apple icon and select "System Preferences". Then, click on "Network". Click "OK" once your computer detects a new network port. Click "Apply Now" to activate the Card/port.



Step 4 – Run utility, connect to a wireless network

When you insert the Card, the "Belkin Wireless Network Utility" appears. Click on "Site Survey" to scan for available wireless networks. Select your SSID from the Site Survey list and click "CONNECT" to connect the wireless network.

If the SSID has wireless security enabled, you will be prompted for the appropriate key.

Click on "Profile" to add/manage wireless networks. You can select and fine-tune each profile from the "System Configuration" tab and set up wireless security by clicking on "Authentications & Security".

For a quick view of your current connection status, click on "Link Status" or "Statistics" for more info.

Support

Belkin provides free technical support via phone and the Web. However, we encourage you to attempt Steps 1 through 4 before contacting us. If you try this and still have trouble, please contact Belkin Support.

© 2007 Belkin International, Inc. All rights reserved. All trade names are registered trademarks of respective manufacturers listed. Apple, Mac, and Mac OS are trademarks of Apple Inc., registered in the U.S. and other countries.